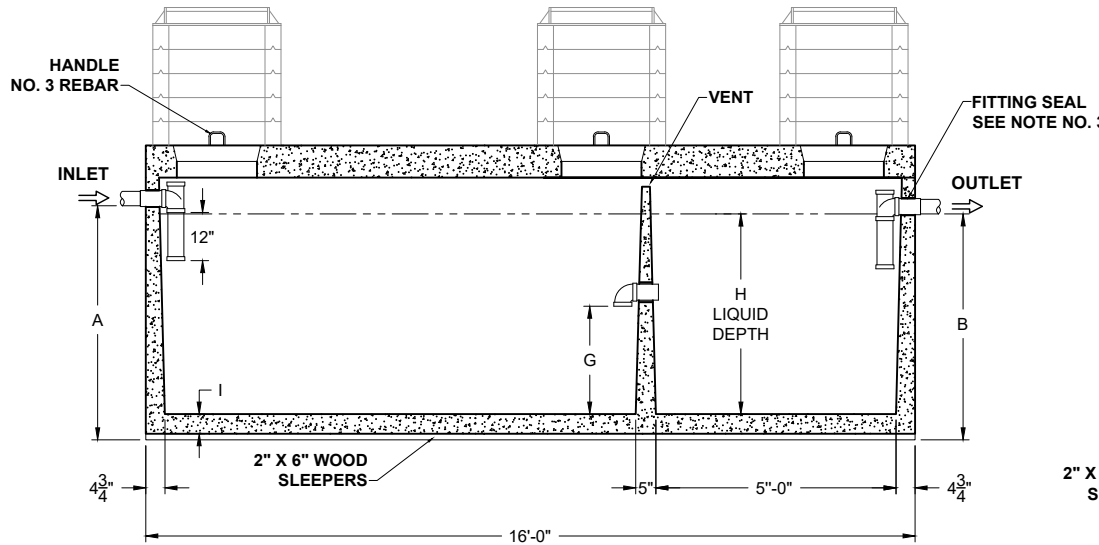
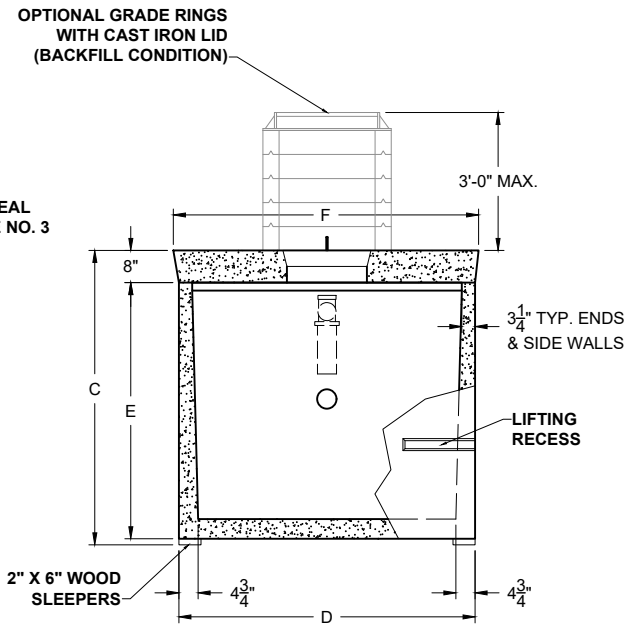


**PLAN VIEW**



**SECTION THRU "A-A"**



**SECTION THRU "B-B"**

**H-20 TRAFFIC RATED  
"HEAVY DUTY"**

ALL DIMENSIONS ARE IN INCHES & WEIGHTS IN LBS - (RISER WT. NOT INCLUDED)										EXCAVATION SPECIFICATIONS				
MODEL	A	B	C	D	E	F	G	H	I	WEIGHT	LENGTH	WIDTH	BELOW INLET	TANK HEIGHT
PC S-2-2000-HD	43	41	57	85	49	86	24 3/4	34 1/2	4 1/2	24,225	19'-0"	10'-1"	3'-5"	4'-9"
PC S-2-2500-HD	52	50	65	85	58	86	29 1/4	43 1/2	4 1/2	26,040	19'-0"	10'-1"	4'-2"	5'-5"

**Pro-Cast**  
PRODUCTS INC.

27417 E. Third St., Highland, CA 92346  
909-793-7602 phone 909-793-1283 fax  
www.procastproducts.com

**PRODUCT NAME:**  
**HD SEPTIC TANK**

**DESCRIPTION:**  
2000 THRU 2500 GALLONS  
H-20 TRAFFIC RATED

**DESIGN SPECIFICATIONS**

**DESIGN LOAD:** H-20 TRAFFIC RATED

WITH DRY SOIL CONDITIONS (WATER LEVEL BELOW TANK). SUITABLE SUB-BASE BEDDED WITH GRANULAR MATERIAL SHALL BE PREPARED TO HANDLE ANTICIPATED LOADS. FOR COMPLETE DESIGN AND PRODUCT INFORMATION, PLEASE CONTACT PRO-CAST PRODUCTS.

PRO-CAST PRODUCTS RESERVES THE RIGHT TO MAKE CHANGES TO PRODUCT DESIGN AND/OR DIMENSIONS WITHOUT NOTICE. PLEASE CONTACT PRO-CAST PRODUCTS WHENEVER NECESSARY FOR CONFIRMATION OR ADVICE ON PRODUCT DESIGN.

**NOTES:**

1. NOT USED
2. REFER TO SPECIFICATION SHEET NOS. S-251 & S-252
3. REFER TO SPECIFICATION SHEET NO. S-201
4. REFER TO SPECIFICATION SHEET NO. S-250

**SCALE:** DO NOT SCALE

**DRAWN BY:** TPC 12.20.2024

**REVISED BY:**

**CHECKED BY:**

**DRAWING NO.**  
**HD-S-002**

g:\3 - standard products folder\new standard product drawings\septic tanks\septic tanks - updated - dec 2024.dwg